

Cards-4-Conversations: HOW TO USE THESE CARDS



** download card set for printing or viewing on-screen, at <https://interfaithbelief.glade.org/activities/>

This card set can be used in different ways to prompt new conversations, including:-

- over a coffee/ tea with a friend
- on your own as a journal entry/ personal goals
- within a workshop
- during reflective/ circle time
- with a social group
- with a community grouping
- during family-time
- to prompt thought and reflection for worship/ thought for the day

Tips for holding conversations

Often the best conversations take place when we are curious, when we've time to explore/ "chat" without the need to find a correct answer and we can really listen, reflect and explore what we think and feel.

It's worth setting out some 'ground-rules' to encourage conversation and talking, with people feeling at ease:-

- we're here to CONNECT, so remain open-minded.
- what's said here (in this room, space etc), stays here. Be confidential.
- really listen and take in, what's being said. Listen at 3 levels** for facts, feelings, talking for purpose.

**also known as listening with the head (the facts), the heart (the feelings) and the feet (the purpose).

What questions could I be asking?

You can answer any of these questions/ have a conversation around any of these themes and in any order. We recommend spending at least 5 minutes on each question/ theme.

What happens at the end of the conversation?

Taking inspiration from the conversation, ask each member of your group to complete the sentence "I will..."

For more materials & activities visit: <https://interfaithbelief.glade.org/>

The GLADE Centre Charity registration number 1104504 Company registration number 5148165

Taking a pledge/ showing commitment

What action do you feel inspired to take:-

To help build a greater sense of belonging?
To build compassion & care & confidence?

To increase your own understanding?
For togetherness & solidarity?

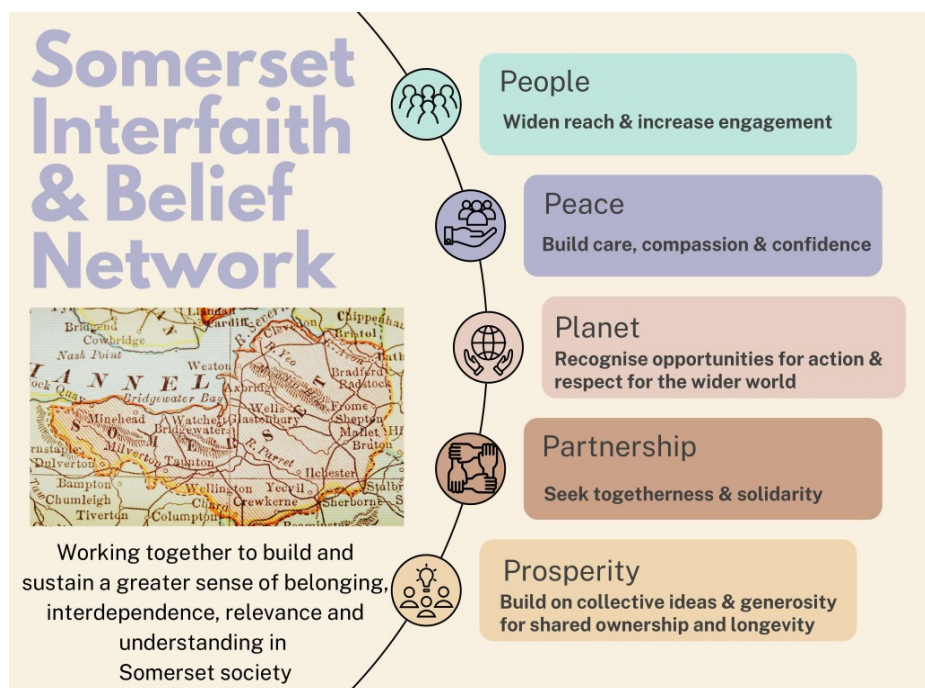
Card sorting/ Ranking

Sort the cards and 'rank' them, for example

from those you're most interested in, to those you're least interested in

from those you know most about/ have experienced to those you know least about/ have not experienced

Sort and organise the cards (there is no 'correct answer') where you feel each best sits under the icons/ headings below;



Curated materials for teaching, lifelong learning, social activity, all free to download, can be found by clicking o:-

the icon for **PARTNERSHIP-togetherness & solidarity**; **view materials on freedom**

the icon for **PEACE-Build care, compassion & confidence**

the tab for **ACTIVITIES**

<https://interfaithbelief.glade.org/>

For more materials & activities visit: <https://interfaithbelief.glade.org/>

The GLADE Centre Charity registration number 1104504 Company registration number 5148165